



CLOVER CHRONICLES

February 2019

Isabella County

Inside this issue:

<i>Club Corner</i>	2
<i>Dairy Feeder Weigh-In</i>	2
<i>Small Animal News</i>	3
<i>Statewide Calendar of Events</i>	4
<i>Statewide News</i>	5
<i>Evergreen Spaghetti Dinner Fundraiser</i>	6
<i>Chocolate Workshop</i>	7
<i>PEP Meet & Greet</i>	8
<i>Bee Keeping Club</i>	9
<i>Junk Drawer Robotics</i>	10
<i>Winter Blast</i>	11
<i>Calendar</i>	12

New Leader Orientation

Wednesday, February 27, 2019

6:00 p.m. - 8:00 p.m.

Isabella County Building, Room 320

Volunteers who have completed the Volunteer Selection Process, or who are in the process of completing are encouraged to attend the New Leader Orientation meeting. Light refreshments will be provided.

Register to the Extension office by February 22.

Shooting Sports Instructors Needed

We are looking for volunteer leaders to become certified as 4-H Shooting Sports instructors in archery, rifle, muzzle loader, and shotgun.



You will need to attend the April 26 - 28, 2019 workshop at Kettunen Center, in Tustin. At the workshop you will learn safe and proper use of guns and archery equipment that you can teach the youth.

Please call the Extension office if you are interested or for more details.

Fair Trophy Sponsors Needed

There is a need for fair trophy sponsors for several project areas. If you or someone you know is interested in sponsoring a trophy, please contact Eva Loudenslager at mt.pleasantfair@gmail.com.

Attention Fair Superintendents

If you have any class changes for your project area in the fair book, please contact Lisa Filhart (lfilhart5@att.net) by March 15.

Isabella County 4-H on Facebook

Be sure to **LIKE** our Isabella County 4-H page to stay up to date on all the latest news and happenings in 4-H.

<https://www.facebook.com/Isabella-County-4-H-796605943778221/>



Protected Under
18 U.S.C. 707

CLUB CORNER

Aim High - At our January meeting members/families discussed several community service events completed: gift wrapping for Meijer customers, picking up trash, and helping others with simple chores. Suggestion for future service include working with Commission on Aging in various roles, and connecting with assisted living centers to visit and play games with residents. Some members planned to attend the state 4-H rabbit & cavy show at MSU and one member shared her experiences preparing for the State 4-H Award process. Several members plan to attend Exploration Days this year.

Canine Clovers - Each meeting, we do pledges and business first. Sometimes we play a game or do another activity and then we work with our dogs during dog training. Our club recently made t-shirts for each club member. They are blue and say "Canine Clovers" on the front and back.

Country Kids Livestock - We had a meeting on January 20. We discussed when pig tagging would be (Sunday, May 5). There is no time set yet. Our club decided on our buyer gifts and how much we would be spending for each gift. As a club, we celebrated that we got third place in the Christmas tree decorating contest at the Rosebush Manor! We received a \$25 award. Although we typically go to Snow Snake for a club fun activity, we are not because we do not have enough interest. Lastly, we discussed ideas that we would bring to the Fair Fun committee. Our next meeting is February 24 at 2:00 p.m.

Country Neighbors - At our January meeting we welcomed five new members and talked about the petting zoo we do every year during Maple Syrup Festival. We also talked about our current fundraiser going on now, which is selling Bear Claw trash bags for a month. We are going to buy new club shirts and fair parking passes. We also discussed doing another fundraiser.

Evergreen - We were quite busy at our January meeting. We began the meeting by releasing cloverbuds after roll-call to design and color placemats for our upcoming spaghetti dinner. Two of our teen members presented on exchange opportunities they have been a part of. These presentations were very informational and gave our co-leader an opportunity to explain the opportunities for foreign exchange through 4-H! Many members seemed very excited about these opportunities and it contributed to their involvement in the rest of the meeting. We closed the meeting by preparing everyone for the upcoming spaghetti dinner and signing up for shifts.

Dairy Feeder Weigh-In

Saturday, March 9, 2019

8:30 a.m. - 11:30 a.m.

Isabella County Fairgrounds



Animals cannot weigh over 250 lbs. and must be:

- One of the following breeds: Ayrshire, Brown Swiss, Guernsey, Holstein, or Jersey
- Castrated & Dehorned

Each member can either:

- Weigh in a maximum of two feeders or,
- Within immediate families of more than one exhibitor: each member may weigh in one feeder, and one "family alternate" can be weighed in for the family. Only one feeder per exhibitor can be brought to fair when a family alternate has been weighed in.

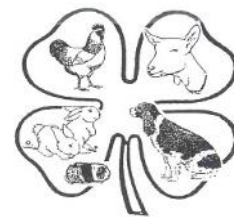
It's required that by Fair, every feeder must have a RFID tag (radio frequency identification) in their ear. If you have any questions, contact Mike Lattimer at (989) 513-7839.

4-H Ambassador Information

This program is open to ALL 4-H & FFA members aged 8 - 19, by January 1. More information coming soon - dates and details will be published in the March Clover Chronicles.

Small Animal News

- Reminder, if you live outside of Isabella County and plan to sell in the small animal auction, you will need approval from the Small Animal Association. Plan to attend their next meeting on Thursday, February 21 at 7:00 p.m. at the Isabella County Building. If you have already met with the Small Animal Association to sell in the auction and were approved, you do not have to do it again.
- It's not too early to make arrangements to secure whatever small animal you wish to exhibit at the 2019 fair. Reach out to someone you have worked with in the past or contact the appropriate small animal superintendent for assistance. It has become more difficult over the past few years for kids to purchase their fair animals as they are not quite as available as they used to be.



Broiler Chick Orders

Time to order your broiler chicks!
Orders need to be placed at the Extension office by April 26. We are not sure yet on the approximate cost per bird. Contact the Extension office to place your order.

Dog Project Workshop

March 9, 2019
Michigan State University, Anthony Hall

All youth aged 8-19 and adults, (parents of youth are welcome to register) interested in learning more about care and management of their dog project. Cost is \$25 which includes training materials and lunch.

To register: <https://events.anr.msu.edu/DogProjectWorkshop/>

Upcoming Horse Events

Full event details for each event including registration forms and event flyers can be found on our website:

https://www.canr.msu.edu/horses_ponies/

4-H Teen & Adult Horse Leaders Conference

February 23, 2019

Registration is LIMITED

[Facebook Event](#)

SAVE THE DATES:

4-H Hippology Contest: March 23rd

4-H/FFA Horse Judging Contest: March 24th



4-H Teen Leaders in Action Workshop

February 23-24, 2019
Kettunen Center, Tustin, MI
for 4-H teens ages 13-19 (4-H age)
\$45

<https://events.anr.msu.edu/TeenTeachers19/>

Registration deadline: 2-14-19
Contact your local MSU Extension office for questions and local scholarship information.

Agriculture Literacy (native bees)
Global Citizenship
Healthy Living
Money Management

4-H teen leaders are being sought to help meet the challenge of educating the next generation of young people!! You will have the opportunity to build your own leadership skills while teaching a fun lesson to other young people on one of these important and timely topics.

STATEWIDE CALENDAR OF EVENTS

New Michigan 4-H Cavy Fitting & Showmanship Guide



Michigan 4-H cavy showmen now have a new resource! The Michigan 4-H Cavy Fitting & Showmanship Guide contains objectives and guidelines for the 4-H participant in cavy fitting and showing contests.

Information covered in the resource includes feeding, care, handling and conditioning. The bulletin provides full color, step-by-step instructions with photo illustrations for completing the contest examination. Also included is a cavy showmanship scorecard.

Download your free copy today at <https://www.canr.msu.edu/resources/cavy-fitting-showmanship-member-s-guide-4h1345>.

4-H Events and Workshops

February 2 : 4-H Benefit Clinic

MSU Pavilion, East Lansing

Learn more about form, function, improving patterns and lead changes from experts Brian Bannerman, September Croel and Karen Waite during this day of interactive sessions.

<https://www.canr.msu.edu/events/4-h-benefit-clinic>

February 15-16: 4-H Veterinary Science Teen and Adult Leaders Workshop

Kettunen Center, Tustin

Explore animal systems and learn about animal health for a broad array of animals species. Come prepared to learn from experienced veterinarians and others.

<https://www.canr.msu.edu/events/4-h-veterinary-science-teen-and-adult-leaders-workshop>

February 16: Michigan 4-H at the Griffins

VanAndel Arena, Grand Rapids

Come out to VanAndel Arena for an exciting night of hockey with the Grand Rapids Griffins! A portion of each ticket will support Michigan 4-H programming.

<https://www.canr.msu.edu/events/michigan-4-h-at-the-griffins>

February 16-17: 4-H Beef, Sheep and Swine Teen and Adult Leaders Workshop

Kettunen Center, Tustin

This workshop is designed for both teen and adult leaders who are involved with beef cattle, sheep and swine projects. Topics include animal health, management, care and nutrition.

<https://www.canr.msu.edu/events/4-h-beef-sheep-and-swine-teen-and-adult-leaders-workshop>

February 23: 4-H Teen and Adult 4-H Horse Leaders Conference

Anthony Hall, East Lansing

Attend this conference to explore topics such as horse judging, equine first aid, and veterinary care for horses. Information shared will assist leaders in youth development and more.

<https://www.canr.msu.edu/events/mi-4-h-teen-adult-4-h-horse-leaders-conference>

February 23-24: 4-H Teen Leaders in Action Workshop

Kettunen Center, Tustin

Teens attending this workshop will learn how to teach an educational lesson to other youth in their local community.

<https://www.canr.msu.edu/events/4-h-teen-leaders-in-action-workshop>

February 24: 4-H Alumni Tip-Off Reception

MSU Spartan Stadium, East Lansing

The Michigan 4-H alumni community is invited to an alumni reception prior to the 4-H Day at the Breslin event.

<https://www.canr.msu.edu/events/4-h-alumni-tip-off-reception>

February 24: 4-H Day at the Breslin

MSU Breslin Center, East Lansing

Show your Michigan 4-H pride while cheering on the MSU Women's Basketball team during this annual event.

<https://www.canr.msu.edu/events/4-h-day-at-the-breslin>

For the most up-to-date events listing, go to <http://4h.msue.msu.edu/events>.

STATEWIDE NEWS AREA

World Food Prize Michigan Youth Institute registrations due April 1

As millions across the globe deal with food insecurity, the World Food Prize Michigan Youth Institute (WFP MIYI) offers young people an opportunity to be part of the solution. Held May 9, the event seeks to inspire and prepare the next generation of global leaders to end world hunger.

Occurring in two locations, East Lansing and Marquette/Chatham, attendees have the opportunity to share their ideas related to global food security with experts and other Michigan youth while learning how university faculty and staff members, researchers and students are working to address world hunger.

To participate, youth should be in grades 8-12 and register by the April 1 deadline. As part of the registration process, youth are required to prepare a two- to five-page research paper about one of twenty grand global challenges which are related to food, hunger and poverty. At the event, youth present and discuss their papers with other attendees and research and industry experts. They also participate in interactive activities related to global food challenges and engage with area experts to discuss solutions to global hunger and poverty.

The top performing students at the WFP MIYI will be selected to attend the World Food Prize Global Youth Institute in Des Moines, Iowa, in October. For more information, visit <https://www.canr.msu.edu/wfpmiyi/>. Registrations and papers are due April 1.



Michigan 4-H Miniature Horse Show Guidelines now available



The new Michigan 4-H Miniature Horse Show Guidelines allow Michigan 4-H mini showmen to understand the rules governing their shows. It is also a great resource for leaders and show managers, as well as 4-H members!

Included in the document is information for all classes, including: jumper, hunter, costume, driven dressage, gymkhana, pole bending and more.

Download your free copy today at https://www.canr.msu.edu/horses_ponies/uploads/files/Miniature-Horse-Rule-Book-Final-2019.pdf.

Start planning your 4-H Exploration Days adventure!



A fun summer favorite for Michigan 4-H'ers across the state, plans are well underway for the 2019 4-H Exploration Days!

This signature MSU precollege program, to be held June 19-21, allows youth to stay on the campus of Michigan State University while attending classroom and field trip sessions throughout their stay. In addition to enjoying fun and learning on campus, attendees build the skills they need to successfully transition to college and to life as an adult.

The event features more than 200 session choices. Begin planning your stay when the 4-H Exploration registration books become available mid-February! Topics include animal science, business and entrepreneurship, international language and culture, performing and visual arts, and science, engineering, and technology.

Use the registration book to make your top session selections in advance of registration opening on March 12 (also be on the lookout for session age restrictions). Sessions will fill up quickly and all registration information is due to your county's MSU Extension office at the end of April, although specific dates vary.

For more information, contact your local MSU Extension office or visit https://www.canr.msu.edu/4_h_exploration_days/.

Evergreen 4-H Club Spaghetti Dinner Fundraiser



Sat. Feb. 9th, 2019

Serving 4:30 – 7 p.m.

St. Henry's Parish Center, Rosebush
On the corner of Mission and Vernon

Suggested donation: Adults: \$8

Children (6-12): \$5

5 & under free

Maximum \$25 per family

Enjoy an evening of warm hospitality while supporting Evergreen 4H Club in raising funds to help purchase sawdust for animal bedding at the fair, and provide Thanksgiving Dinner to Rosebush Manor residents and their families,

All you can eat!

- Spaghetti - both meat & meatless sauce
- Salad
- Garlic bread
- Cake
- Coffee, lemonade & water

Tickets available from Evergreen 4H Club members,
Isabella County Extension Office or by calling
Kara Lynch @ 989-330-0789 or Jayme Martin @ 989-330-1139.
Tickets also available at the door.



I Love Chocolate Workshop

For Adults & Youth ages 10 and up

February 12, 2019

6 PM - 8 PM

Isabella County Building, Room 320



100% Cocoa

You are invited to join us for a delicious lesson on chocolate. In Have fun learning more about this “Food of the Gods”

We will:

- learn about how cacao is grown and
- how chocolate is made.
- taste chocolate from around the world
- make some tasty chocolatey treats.



**To register by February 7 or for more information, contact:
Kristi Schreiber at schrei61@msu.edu or (989) 317-4079**

MSU is an affirmative-action, equal-opportunity employer. Michigan State University Extension programs and materials are open to all without regard to race, color, national origin, gender, gender identity, religion, age, height, weight, disability, political beliefs, sexual orientation, marital status, family status or veteran status.

Accommodations for persons with disabilities may be requested by contacting the MSU Extension office at (989) 317-4079 at least 5 days prior to the scheduled event to ensure sufficient time to make arrangements. Requests received after this time will be met when possible.

Proud Equestrian Program



Meet & Greet



When: March 6, 2019

Time: 6:30 PM – 8:30 PM

Where: Isabella County Building, Room 320

(200 N. Main Street, Mount Pleasant MI, 48858)

What: Proud Equestrian Program (PEP) is a therapeutic riding program for youth with cognitive and physical disabilities

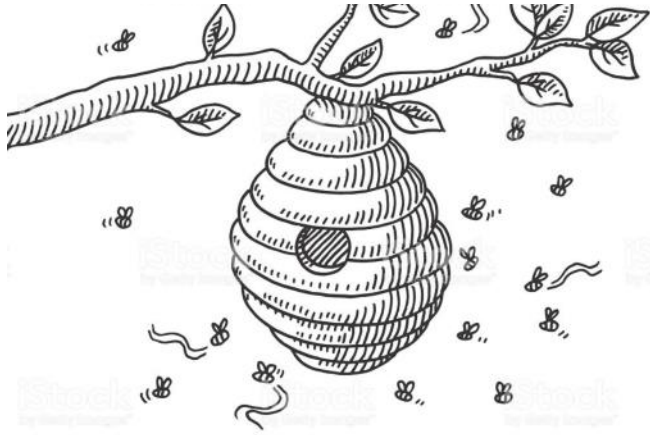
If you are seeking information about the Proud Equestrian Program, please plan to attend our meet and greet evening for horse education, rider safety education and fun!



The program will run June 11, 18, 25,
July 9, 16 and 27.

Please register at the MSU Extension office
by contacting Kristi Schreiber at:
schrei61@anr.msu.edu or 989-317-4079

MICHIGAN STATE
UNIVERSITY | **Extension**



BEElievers 4-H Club

(bee keeping)

If you are already in a 4-H Club, this can be your secondary club.

Want to find out what the buzz about bees is all about? This club is designed to teach about the ancient art of beekeeping. Begin learning about the importance of bees and travel through the world of bee development and behavior!

DATE

**March 13 - Wednesday
from 6:00 PM - 8:00 PM**

LOCATION

Isabella County Building
(200 N. Main Street, Mt. Pleasant MI, 48858)

3rd floor ○ Room 320

WHO

For youth ages 8 - 19

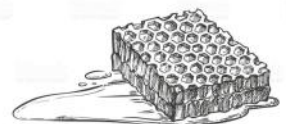


For more information about the club, please contact Karl Geiger at karlcgeiger@yahoo.com or (989) 506-2745.



**MICHIGAN STATE
UNIVERSITY**

Extension



MSU is an affirmative-action, equal-opportunity employer. Michigan State University Extension programs and materials are open to all without regard to race, color, national origin, gender, gender identity, religion, age, height, weight, disability, political beliefs, sexual orientation, marital status, family status or veteran status. "Accommodations for persons with disabilities may be requested by contacting the MSU Extension office at (989) 317-4079 at least 5 days prior to the scheduled event to ensure sufficient time to make arrangements. Requests received after this time will be met when possible.

Junk Drawer Robotics

4-H Robotics Curriculum

What

4-H Robotics is a series of activities designed to make science, engineering and technology engaging and meaningful in the lives of youth.

It focuses on emphasizing different aspects of robotics while youth build their own robots and develop robotics knowledge and skills.



Who

For youth (ages 8-19)
and volunteer leaders

When

March 19, 2019
6 PM - 8 PM

Where

Isabella County Building
Room 320
200 North Main Street
Mt. Pleasant, MI 48858

To register:

Contact MSU Extension at (989) 317-4079 by March 11



MICHIGAN STATE
UNIVERSITY | **Extension**

MSU is an affirmative-action, equal-opportunity employer. Michigan State University Extension programs and materials are open to all without regard to race, color, national origin, gender, gender identity, religion, age, height, weight, disability, political beliefs, sexual orientation, marital status, family status or veteran status. Accommodations for persons with disabilities may be requested by contacting the MSU Extension office at (989) 317-4079 at least 5 days prior to the scheduled event to ensure sufficient time to make arrangements.

Requests received after this time will be met when possible.

A collaboration hosted by Mid Michigan College,
Michigan State University Extension 4-H and Jay's Sporting Goods.

Winter BLAST

FREE FAMILY FUN

Join us as we have
a day of winter fun!

Sat., Feb. 9
10am-2pm

Mid Michigan College
Harrison Campus
1375 S. Clare Avenue, Harrison

- **Learn** how to Geocache
- **Ride** a fat tire bicycle
- **Create** a pine cone bird feeder
- **Learn** how to snowshoe
- **Make** a S'more
- **Try** your skill at the Hockey Shootout
- **Bring** a sled to join others on the hill
- **Relax** with popcorn and hot chocolate
and much, much more!



MICHIGAN STATE
UNIVERSITY | Extension

JAY'S
SPORTING GOODS



MID
MICHIGAN
COLLEGE

Adults and children dress appropriately for outdoor weather conditions!

For more information (989) 539-7805 or (989) 386-6625.

Michigan State University Extension
Isabella County
200 N. Main Street
Mt. Pleasant, MI 48858

Phone: (989) 317-4079

Fax: (989) 773-1622

Website:

<https://www.canr.msu.edu/isabella/>



[Facebook](#)

Isabella County Youth & Farm Fair July 20 - 27, 2019

SAVE THE DATES

I Love Chocolate Workshop - February 12, 2019

New Leader Orientation - February 27, 2019

PEP Meet & Greet - March 6, 2019

Dairy Feeder Weigh-In - March 9, 2019

Junk Drawer Robotics - March 19, 2019

Shooting Sports Kick-Off Event - April 6, 2019

Swine Tagging - May 5, 2019

Sheep & Goat Weigh-In - May 11, 2019

4-H Exploration Days - June 19 - 21, 2019

Flower Arranging Workshop - June 26, 2019

4-H Summer (overnight) Camp - July 9 - 11, 2019

4-H Cloverbud Camp - July 16 & 17, 2019

Isabella County Youth & Farm Fair - July 20 - 27, 2019

Spa Gift Workshop - November 5, 2019

Isabella County 4-H Calendar

February 5	Teen Horse Leaders @ MSUE	6 PM
5	Horse Leaders @ MSUE	7 PM
11	Livestock Producers @ MSUE	7 PM
12	I Love Chocolate Workshop @ MSUE	6 PM
18	OFFICE CLOSED	
20	Shooting Sports Committee @ MSUE	7 PM
21	Small Animal Association @ MSUE	7 PM
26	4-H Council @ MSUE	7 PM
27	New Leader Orientation @ MSUE	6 PM

MSU is an affirmative-action, equal-opportunity employer. Michigan State University Extension programs and materials are open to all without regard to race, color, national origin, gender, gender identity, religion, age, height, weight, disability, political beliefs, sexual orientation, marital status, family status or veteran status. Issued in furtherance of MSU Extension work, acts of May 8 and June 30, 1914, in cooperation with the U.S. Department of Agriculture. Jeffrey W. Dwyer, Director, MSU Extension, East Lansing, MI 48824. This information is for educational purposes only. Reference to commercial products or trade names does not imply endorsement by MSU Extension or bias against those not mentioned.

"Accommodations for persons with disabilities may be requested by contacting the MSU Extension office at (989) 317-4079 at least 5 days prior to the scheduled event to ensure sufficient time to make arrangements. Requests received after this time will be met when possible."

Kristi Schreiber, 4-H Program Coordinator
schrei61@anr.msu.edu

Nonie Gross, Secretary
Paul Gross, Extension Educator
Belinda Laughlin, Master Gardener Coordinator
Kara Lynch, Extension Educator
Sabrina McGee, SNAP-ED PI
David Rowley, Extension Educator